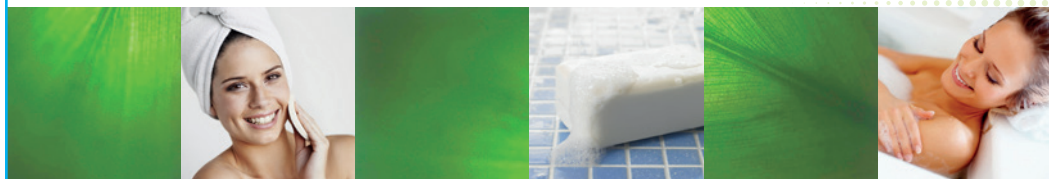


Base Formulation for Micellar Water with GlyAcid®

Micellar Water is a quite easy but essential concept to complete a skin care product line. The GlyAcid® is used here as an active to purify the skin and boost cell renewal. The percentage and pH can be adjusted to obtain the desired effect.



Phase	Product	INCI Name	% (w/w)
A	Demin. Water	Aqua	up to 100
	MinaCare Pentiol ³	Pentylene glycol	1.0
	Glycerin	Glycerin	2.0
	BergaSoft DG 50¹	Decyl Glucoside	1.0
	Disodium Cocoamphodiacetate	Disodium Cocoamphodiacetate	2.0
	Neodermyl®	Glycerin (and) Water (and) Methylglucoside Phosphate (and) Copper Lysinate/Prolinate	1.0
	Avena Sativa (Oat) Extract	Water (and) Avena Sativa (Oat) Extract	1.0
	EDTA	Tetrasodium EDTA	0.1
B	GlyAcid® 70 HP²	Glycolic Acid (and) Water	4.3
	NaOH	Sodium Hydroxide	up to desired pH
C	Preservative / Fragrance	-	q.s.

Suppliers: 1: Berg + Schmidt, 2: CrossChem distributed by Berg + Schmidt, 3: Minasolve

Formulation instructions:

- Weigh and mix Phase A under gentle stirring to avoid foam
- Prepare Phase B with desired pH
- Add Phase B to Phase A
- Add Phase C

Note: For an optimal effectiveness of GlyAcid®, we recommend working with a pH between 3.8 and 4.3

pH = 4.1

Viscosity (24H) n.a.

Stability under progress / Intern ID: RPO 0017

