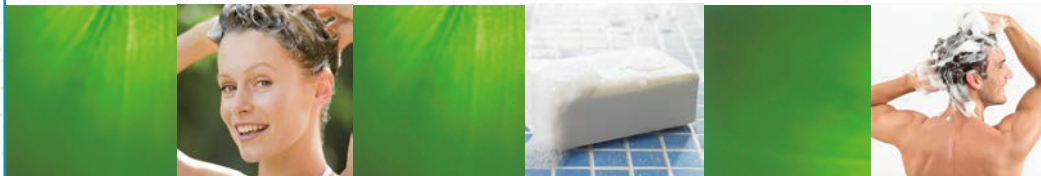


Base formulation for Solid Shampoo

With BergaSoft SCI 80, BergaSoft LG 50 and BergaCare SB

This Solid Shampoo uses BergaCare SCI 80 as main component, allowing the quick build-up of a creamy and luxurious, yet mild foam. BergaSoft LG 50, a mild surfactant, serves as a foam quality booster. The formula contains BergaCare SB to soften the hair and to provide care.



Phase	Product	INCI Name	% (w/w)
A	Demin. Water	Aqua	Up to 100
	BergaSoft SCI 80 ¹	Sodium Cocoyl Isethionate	55,0
	BergaSoft LG 50 ¹	Lauryl Glucoside	10,0
	BergaCare SB ¹	Butyrospermum Parkii (Shea) Butter	4,0
	Behenyl Alcohol	Behenyl Alcohol	2,0
	Stearic Acid	Stearic Acid	10,0
B	Cocamidopropyl Betaine 40%	Cocamidopropyl Betaine	10,0
	Preservative/Fragrance	-	q.s.

Suppliers: ¹ Berg + Schmidt

Formulation instructions:

- Weigh all raw materials from phase A and heat up to ~80°C while stirring
- When all is dissolved add preservative, fill into forms and let it stand until hardened.

pH = 5,6

Viscosity (24H) = n.a.

Internal Ref: SS-012-BSC

Distributed by:
Global Ingredient Solutions
Customerservice@ingsolutions.com
202 Fashion Ln. #202, Tustin, CA 92780
Phone: (714) 884-3872

