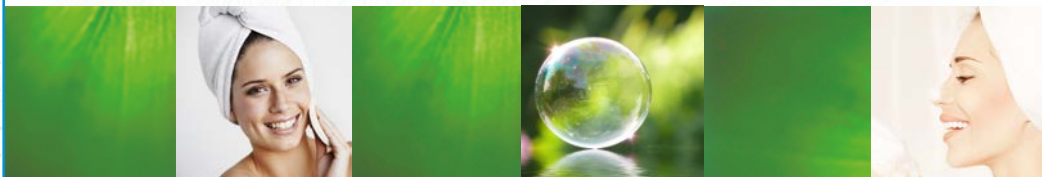


Base formulation for Wash Foam

With 20% GlyAcid® 70 HP, BergaSoft DG 50 and BergaSom Sun 50



This Face Wash does not only cleanse the skin with the mild surfactant BergaSoft DG 50, it also contains a high concentration of GlyAcid® 70 HP which can stimulate the skin's cell turnover, leading to a smoother and radiant skin. BergaSom Sun 50 serves as an active ingredient, mimicking the skin's own lipids for an improved skin condition.



Phase	Product	INCI Name	% (w/w)
A	Demin. Water	Aqua	Up to 100
	BergaSoft DG 50 ¹	Decyl Glucoside	3,0
	Glycerin 99,5%	Glycerin	1,0
	1,3-Butylene Glycol	Butylene Glycol	1,0
	Polysorbate-60	Polysorbate-60	0,2
	BergaSom Sun 50 ¹	Lecithin	0,1
	D-Panthenol	Panthenol	0,5
B	GlyAcid® 70 HP ²	Glycolic Acid (and) Water	20,0
	NaOH solution (25%)	Sodium Hydroxide	13,5
C	Preservative/fragrance	-	q.s.

Suppliers: ¹ Berg + Schmidt, ² Crosschem distributed by Berg + Schmidt

Formulation instructions:

- Weigh and dissolve all raw materials from phase A
- Separately weigh and mix phase B and add to A while stirring
- Adjust pH and add the preservative

Note: For optimal effectiveness of GlyAcid®, we recommend working with a pH between 3,8 and 4,3

pH = 3,8

Viscosity (24H) = n.a.

Internal Ref: WS-010-BSC



Distributed by:

Global Ingredient Solutions

Customerservice@ingsolutions.com
202 Fashion Ln. #202, Tustin, CA 92780
Phone: (714) 884-3872