



Night Care Serum

Naturally enhancing the skin barrier

Claims

- ✓ Penetration enhancement
- ✓ Restoration of the skin barrier

Distributed by:

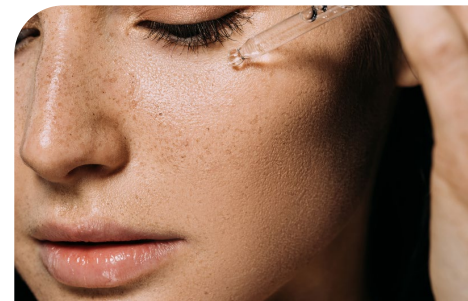


Global Ingredient Solutions

CustomerService@ingsolutions.com

Phone: (949) 336 - 6275

www.globalingredientsolutions.com



| Phase | Product | INCI | Supplier | % (w/w) |
|-------|-------------------------------------|---|--------------|-----------|
| A | Demin. Water | Aqua | - | Up to 100 |
| | Cosphaderm® Sodium LAAS | Sodium Levulinate, Sodium Anisate | Cosphatec | 1.00 |
| | Glycerin | Glycerin | Various | 5.00 |
| | Keltrol® CG-SFT | Xanthan Gum | CP Kelco | 0.50 |
| B | BergaCare FG M12 | Coco Caprylate / Caprate, Dodecane, Citrullus Lanatus Seed Oil | Berg+Schmidt | 3.00 |
| | Dermofeel® GSC | Glyceryl Stearate Citrate | Evonik | 1.00 |
| C | Citric Acid (25% aq.) | Aqua, Citric Acid | - | adjust pH |
| D | BergaCare SmartLipids Ceramide Plus | Aqua, Caprylic / Capric Triglyceride, Ceramide NP, Sodium Stearoyl Glutamate, Pentylene Glycol, Ceramide AP, Phytosterols, Myristic Acid, Oleic Acid, Palmitic Acid, Caprylyl Glycol, Propanediol, Glyceryl Caprylate | Berg+Schmidt | 3.00 |

pH = 5.1

Viscosity (24 h, Brookfield, 20 rpm) = 1300 mPas

Internal Ref.: SLNS-002-ELA

Stability: Stable for 3 months at 20°C, 40°C

Manufacturing Procedure

1. Weigh in glycerin and xanthan gum of phase A and mix.
2. Add water and Sodium LAAS and start stirring.
3. Weigh in phase B separately and heat both phases up to 70 °C.
4. Add phase B to A while stirring and homogenize for 30 seconds.
5. Cool down to below 40 °C, adjust pH and add BergaCare Smart Lipids Ceramide Plus.

Berg+Schmidt Care Ingredients

Telefon: +49 40 284 039-11
careingredients@berg-schmidt.com
www.solutions.berg-schmidt.com

Disclaimer: All information, technical advice and all guideline formulations shown are based on our best knowledge and are for information purpose only.

Berg+Schmidt
Care Ingredients